

# MONDFISH'S MOOD

♩ = 130

ARNE GLOE

**INTRO**

KLARINETTE IN B

BASS

AKKORDEON

5

KL.

B.

AKK.

9

**A**  $\$$

KL.

B.

AKK.

13

KL.

8.

AKK.

2

F Bb

17

KL.

8.

AKK.

Eb Ab

2

20

KL.

8.


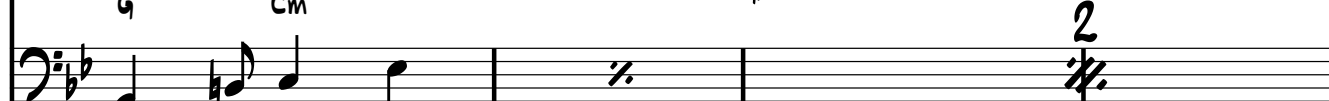
AKK.

Eb Bb F Cm D

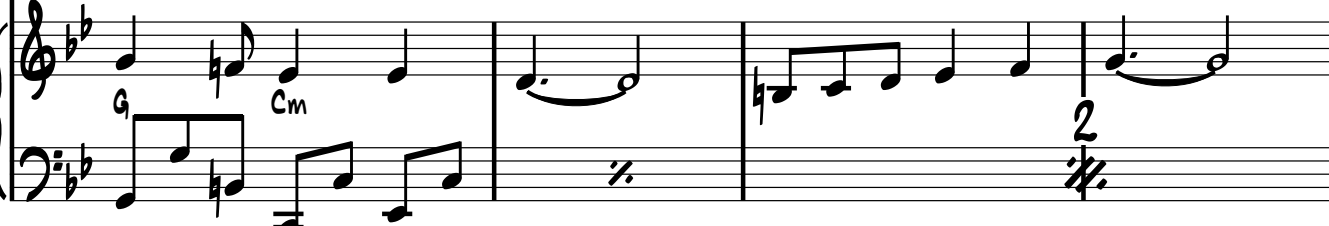
1. 2.

D

24 **INTERLUDE**

KL.   
B. 


**INTERLUDE**

AKK. 

D.C TO CODA ⊕

28 KL.   
B. 

D.C TO CODA ⊕

AKK. 


**SOLO+COMP.**

ON CUE 8

32 KL.   
B. 



**SOLO+COMP.**

ON CUE 8

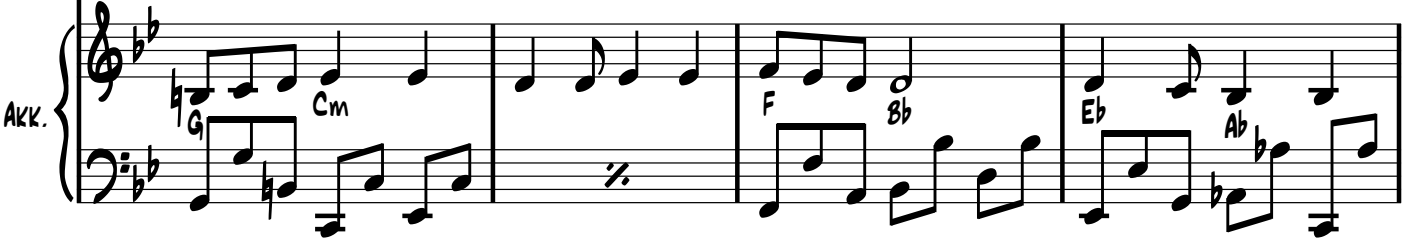
AKK. 

36


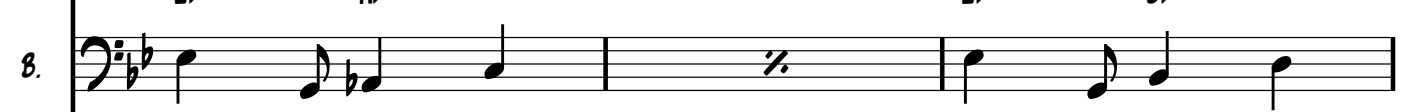
**B**

KL.   
B. 

**B**

AKK. 

40

KL.   
B. 

AKK. 

43

**D.S.**

KL.   
B. 

**D.S.**

AKK. 

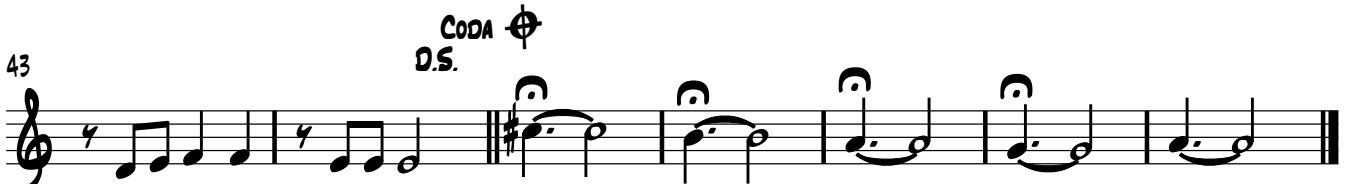
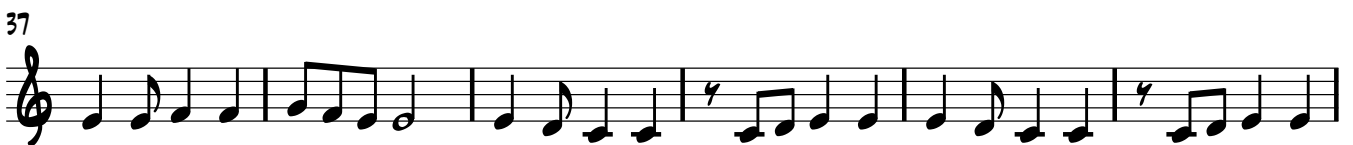
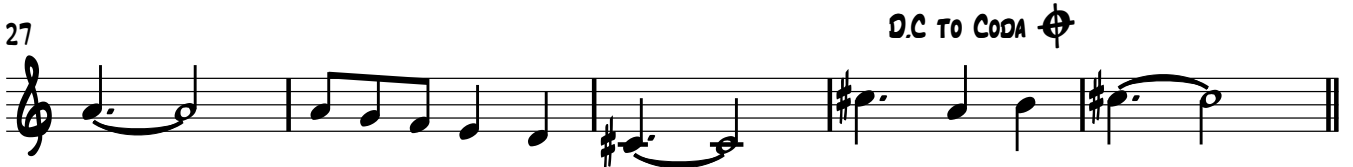
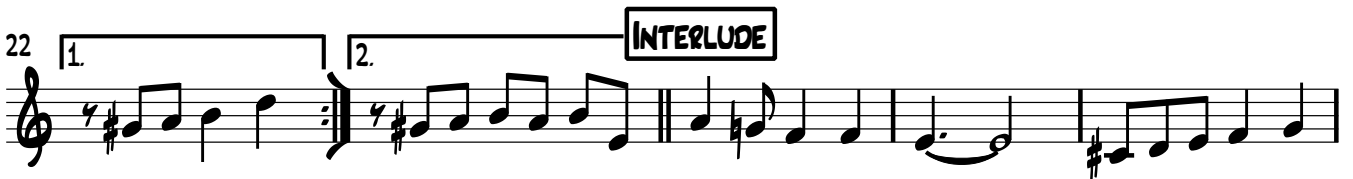


# MONDFISH'S MOOD

KLARINETTE IN B

ARNE GLOE

**INTRO**



# MONDFISH'S MOOD

BASS

ARNE GLOE

## INTRO

130

9

G Cm

9

A G Cm

17

Eb Ab

Eb Bb F Cm D

## INTERLUDE

23

D G Cm

D.C. TO CODA

## SOLO+COMP.

32

G Cm

B G Cm

F Bb

39

Eb Ab Eb Ab Eb Bb F Cm D D.S.

45 CODA

# MONDFISH'S MOOD

AKKORDEON

ARNE GLOE

130

## INTRO

Musical notation for the Intro section, measures 1-6. The key signature is B-flat major (two flats). The time signature is 7/8. The piece starts with a treble clef and a bass clef. The first measure has a G chord in the bass and a Cm chord in the treble. The second measure has a repeat sign. The third and fourth measures have a '2' above the staff with a repeat sign. The fifth and sixth measures also have a '2' above the staff with a repeat sign.

7

## A. 8

Musical notation for section A, measures 7-12. The key signature is B-flat major. The time signature is 7/8. The first measure has a '2' above the staff with a repeat sign. The second measure has a G chord in the bass and a Cm chord in the treble. The third measure has a repeat sign. The fourth and fifth measures have a '2' above the staff with a repeat sign. The sixth and seventh measures have a '2' above the staff with a repeat sign.

13

Musical notation for section A, measures 13-16. The key signature is B-flat major. The time signature is 7/8. The first measure has a '2' above the staff with a repeat sign. The second measure has a repeat sign. The third measure has a repeat sign. The fourth measure has an F chord in the bass and a Bb chord in the treble.

17

Musical notation for section A, measures 17-21. The key signature is B-flat major. The time signature is 7/8. The first measure has an Eb chord in the bass and an Ab chord in the treble. The second measure has a '2' above the staff with a repeat sign. The third measure has an Eb chord in the bass and a Bb chord in the treble. The fourth measure has an F chord in the bass and a Cm chord in the treble.

22

## INTERLUDE

Musical notation for the Interlude section, measures 22-25. The key signature is B-flat major. The time signature is 7/8. The first measure has a '1.' above the staff. The second measure has a '2.' above the staff. The third measure has a D chord in the bass. The fourth measure has a G chord in the bass and a Cm chord in the treble.

26

D.C. TO CODA ⊕

Musical notation for section A, measures 26-29. The key signature is B-flat major. The time signature is 7/8. The first measure has a '2' above the staff with a repeat sign. The second measure has a '2' above the staff with a repeat sign. The third measure has a '2' above the staff with a repeat sign. The fourth measure has a '2' above the staff with a repeat sign.



SOLO+COMP.

ON CUE 8

32

36

8

41

D.S.

45

CODA